

STATISTICS 2009

PIGMEAT



Table of Content

STRUCTURE OF PIG PRODUCERS AND PIG HERD IN DENMARK	
Pig Producers in Denmark	3
Structure of Pig Herd in Denmark	5
PIG POPULATION AND -PRODUCTION IN DENMARK	
Pig Population in Denmark	7
Development in the Pig Herd	8
Production of Pigs in Denmark	9
World Pigmeat Production and Pig Population in Selected Countries	10
EU's Supply Balance of Pigmeat	11
Supply Balance of Pigmeat in Selected Countries	11
SLAUGHTERHOUSES	
Supplies of Pigs for Slaughter in Denmark and Exports	13
Structure of Slaughterhouses	14
Pig Slaughtering in EU and Selected Countries	16
Employment and Wages	17
PRODUCER PIG PRICES AND ECONOMY	
Producer Pig Prices	19
Economy in Pig Production	20
Social Importance of the Pig Industry	21
EXPORT AND IMPORT OF PIGMEAT	
Denmark's Export of Pigmeat	23
Denmarks Export of Pigmeat to EU countries	26
Denmarks Export of Pigmeat for 3 rd countries	28
Trend in Pigmeat Export	30
Export of Live Pigs from Denmark	32
The Development in Rate of Exchange	33
Denmark's Import of Pigmeat	34
EU's Export to 3 rd Countries	35
USA and Japan's Trade in Pigmeat	36
COMMON AGRICULTURAL POLICY AND EXPORT REFUNDS	
Export Refunds	39
CONSUMPTION AND PRICES	
Consumer Prices of Pigmeat in Denmark	41
Sales of Fresh/Frozen Meat from Different Types of Shops	42
Consumption of Meat in the EU	43

Structure of Pig Producers and Pig Herd in Denmark



Pig Producers in Denmark

Slaughterpigs

1989 Pigs per supplier	Number of suppliers	% of all suppliers	Number of pigs	% of all pigs
1 - 200 head	21,256	60.2	1,170,303	7.9
201 - 500 head	5,740	16.3	1,847,352	12.4
501 - 1.000 head	3,845	10.9	2,760,022	18.6
1.001 - 2.000 head	2,927	8.3	4,105,536	27.6
2.001 - 3.000 head	910	2.6	2,184,071	14.7
3.001 - 4.000 head	343	1.0	1,152,819	7.8
4.001 - 5.000 head	133	0.4	590,930	4.0
5.001 - 10.000 head	140	0.4	920,446	6.2
10.001 -	9	-	120,012	0.8
Total	35,303	100	14,851,491	100

1999 Pigs per supplier	Number of suppliers	% of all suppliers	Number of pigs	% of all pigs
1 - 200 head	8,078	43.1	499,065	2.6
201 - 500 head	2,749	14.7	906,839	4.6
501 - 1.000 head	2,191	11.7	1,594,666	8.0
1.001 - 2.000 head	2,464	13.1	3,522,114	17.7
2.001 - 3.000 head	1,351	7.2	3,286,293	16.5
3.001 - 4.000 head	762	4.1	2,614,162	13.1
4.001 - 5.000 head	440	2.3	1,956,399	9.8
5.001 - 10.000 head	611	3.3	4,053,180	20.4
10.001 -	104	0.6	1,458,352	7.3
Total	18,750	100	19,891,070	100

2009 Pigs per supplier	Number of suppliers	% of all suppliers	Number of pigs	% of all pigs
1 - 200 head	986	19.1	66,497	0.4
201 - 500 head	503	9.8	167,945	1.0
501 - 1.000 head	448	8.7	326,073	1.9
1.001 - 2.000 head	680	13.2	978,898	5.6
2.001 - 3.000 head	488	9.5	1,208,872	6.9
3.001 - 4.000 head	442	8.6	1,545,539	8.9
4.001 - 5.000 head	331	6.4	1,484,967	8.6
5.001 - 10.000 head	923	17.9	6,464,789	37.3
10.001 - 20.000 head	312	6.1	4,131,855	23.8
20.001 -	37	0.7	968,471	5.6
Total	5,150	100	17,343,906	100

The statistical figures are based on reports from individual slaughterhouses for the calendar or the financial year.

Structure of Pig Herd in Denmark

Number of herds by type

	1989	1999	2009
Number of farms	81,223	57,831	41,384
Number of farms with pigs	31,556	15,483	5,041
Of which:			
With pigs and sows	14,673	7,092	2,054
With pigs only	8,354	5,574	2,185
With sows only	6,901	2,019	547

Source: Danmarks Statistik

Danmarks Statistik defines a slaughter pig as one of 50 kg and upwards. Farms with pigs less than 50 kg and without sows are accordingly not included in the above table. This is why the 3 categories for farms do not add up to the number of farms with pigs.

Pigs and sows by size of herd

Pigs %	Number of farms		Number of pigs		Sows %	Number of farms		Number of pigs	
	2008	2009	2008	2009		2008	2009	2008	2009
1 - 49	12.5	10.9	0.1	0.1	1 - 4	11.4	8.7	0.1	0.1
50 - 199	8.9	6.2	0.4	0.3	5 - 19	8.4	5.4	0.2	0.2
200 - 499	8.7	8.1	1.4	1.1	20 - 49	3.8	3.6	0.3	0.3
500 - 999	11.2	11.5	3.7	3.5	50 - 99	4.8	5.1	1.0	0.9
1.000 - 1.999	19.8	19.4	13.2	11.6	100 - 199	12.0	10.2	4.9	3.6
2.000 - 2.999	12.6	13.9	14.1	14.0	200 - 299	11.7	12.2	8.2	7.2
3.000 - 3.999	8.8	10.0	13.9	14.0	300 - 399	11.1	11.6	10.7	9.6
4.000 - 4.999	5.7	6.1	11.5	11.1	400 - 499	10.5	9.8	13.0	10.4
5.000 -	11.7	13.9	41.8	44.3	500 -	26.2	33.4	61.6	67.7
Total	100	100	100	100	Total	100	100	100	100



Pig Population and -Production in Denmark



Pig Population in Denmark

2009

1000 head	1 Jan.	1 April	1 July	1 Oct.
Gilts in pig	206	215	209	203
Other sows in pig	597	600	636	637
Total sows in pig	803	815	845	840
Boars	12	12	11	11
Sows with piglets	212	222	226	226
Dry sows	41	37	36	38
Cullud sows and boars for slaughter	9	8	8	7
Gilts (over 50 kg) for breeding	233	243	238	233
Piglets	2,355	2,489	2,554	2,555
Weaners <50 kg	5,149	5,134	5,214	5,485
Slaughter pigs over 50 kg	3,381	3,015	3,304	3,305
Total pig population	12,195	11,975	12,436	12,701

The census is based on a sample of about 3,500 farms.

Percentage distribution of pig population in counties (June census)

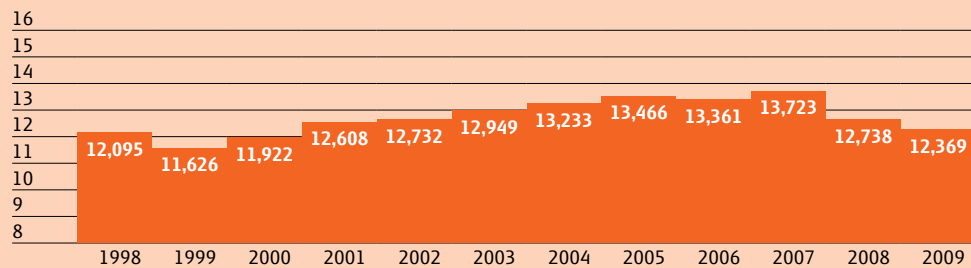
County	2008	2009
Copenhagen and Nordsjælland	0.4	0.4
Bornholm	1.9	1.7
Region Sjælland	11.0	11.0
Fyn	8.9	9.0
Syddjylland	20.3	20.1
Østjylland	16.0	15.2
Vestjylland	19.6	20.9
Nordjylland	21.9	21.7
Total Denmark	100	100

Source: Danmarks Statistik

Development in the Pig Herd and Slaughtering

Development in the pig herd

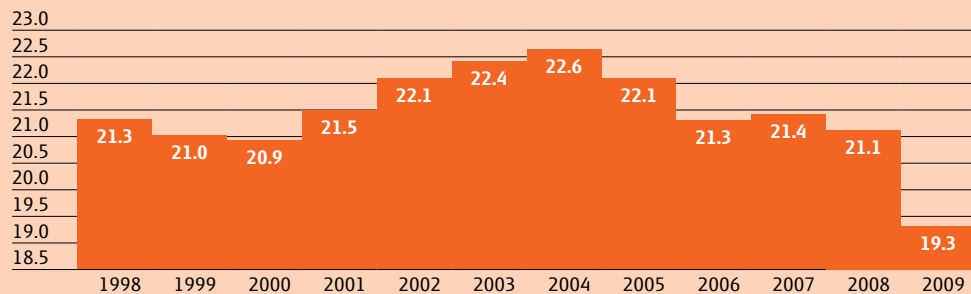
M head



The figures are from Danmarks Statistik's pig census in the summer

Development in slaughtering

M head



The slaughtering includes slaughtering of pigs at the cooperative slaughterhouses, private slaughterhouses, public slaughterhouses and private butchers in Denmark.

Production of Pigs in Denmark

M head	2006	2007	2008	2009
Slaughtering in Denmark	21.4	21.4	21.1	19.3*
Export of slaughter pigs and sows	0.8	1.1	1.0	1.3
Danish production of slaughter pigs and sows	22.1	21.5	22.1	20.5
Export of piglets	3.6	3.8	5.3	7.0
Total	25.7	26.3	27.4	27.6

* 53 weeks



World Pigmeat Production and Pig Population in Selected Countries

	Pigmeat production 1,000 tonnes		Pig population M head	
	2008	2009 ¹⁾	2008	2009 ¹⁾
UK	698	710	4.67	4.55
Germany	4,604	4,718	27.11	26.72
France	2,315	2,293	14.97	14.80
Italy	1,582	1,567	9.27	9.25
Ireland	194	186	1.58	1.61
Netherlands	1,684	1,728	11.71	11.74
Belgium/Luxembourg	1,074	1,064	6.20	6.21
Denmark	1,967	1,922	13.17	12.20
Spain	3,533	3,419	26.06	26.29
Portugal	317	299	2.37	2.34
Sweden	272	267	1.73	1.70
Austria	468	461	3.29	3.06
Finland	217	208	1.43	1.4
Greece	122	125	1.04	1.06
Czeh. Rep.	332	249	2.66	2.14
Hungary	438	348	3.87	3.88
Poland	1,872	1,561	17.62	14.24
Romania	446	442	6.57	6.15
Bulgaria	38	37	0.87	0.75
Other EU-27 countries	369	379	3.74	2.88
EU-27 total	22,542	21,983	159.93	152.97
Russia	2,000	2,120	18.20	18.60
Ukraine	590	530	7.20	6.40
USA	10,590	10,380	68.20	67.10
Canada	1,941	1,976	13.81	12.18
Mexico	1,161	1,160	15.27	15.23
Brazil	3,026	3,190	37.67	39.41
China (incl. Hong Kong)	46,150	48,700	439.90	462.64
Japan	1,260	1,285	9.75	9.90
Rep. of Korea	1,234	1,280	8.74	8.22
Total selected countries	90,494	92,604	778.74	792.65

¹⁾ Provisional figures Source: GIRA

EU's Supply Balance with Pigmeat

	2008 EU-27	2009 ¹⁾ EU-27	2010 ²⁾ EU-27
1000 tonnes (deadweight)			
Production (GIP)	22,671	22,145	22,372
Import (cwe)	48	37	35
Export (cwe)	1,853	1,586	1,500
Stocks	0	0	0
Consumption	20,890	20,492	20,797
Self sufficiency, %	108.5	108.1	107.6

¹⁾ Provisional ²⁾ Forecast Source: Eurostat og GIRA

Supply Balance of Pigmeat in Selected Countries

(excl. stocks), 1,000 tonnes (CWE)

2007	Canada	USA	Mexico	China*	Brazil	Russia	Japan
Production	1,850	9,877	1,200	47,000	2,980	1,880	1,260
Import	160	456	435	130	0	855	1,200
Export	2,060	1,373	70	440	715	1	0
Consumption	970	8,939	1,565	46,690	2,265	2,734	2,500

2008	Canada	USA	Mexico	China*	Brazil	Russia	Japan
Production	1,786	10,599	1,161	46,205	3,015	2,060	1,249
Import	194	377	535	431	0	1,053	1,267
Export	1,129	2,117	91	223	625	1	0
Consumption	847	8,806	1,605	46,413	2,390	3,112	2,486

2009 ¹⁾	Canada	USA	Mexico	China*	Brazil	Russia	Japan
Production	1,790	10,439	1,162	48,890	3,130	2,200	1,310
Import	180	378	678	194	0	845	1,138
Export	1,123	1,872	70	232	707	1	1
Consumption	840	8,995	1,770	48,732	2,423	3,044	2,467

2010 ²⁾	Canada	USA	Mexico	China*	Brazil	Russia	Japan
Production	1,740	10,138	1,166	50,600	3,250	2,250	1,300
Import	210	381	700	200	0	810	1,151
Export	1,130	1,978	80	240	790	1	1
Consumption	930	8,548	1,786	50,560	2,460	3,059	2,457

* Excl. Hong Kong ¹⁾ Provisional figures ²⁾ Forecast Source: USDA

Supplies of Pigs for Slaughter in Denmark and Exports

Slaughterhouses

	2009		2008		%-change 2009:08
	Head	%-share	Head	%-share	
Slaughter Denmark	19,288,591	69.9	21,064,216*	76.9	-8.4
Export:					
Slaughter pigs/sows	1,250,173	4.5	1,059,997	3.9	+17.9
Weaners	7,043,720	25.5	5,280,258	19.3	+33.4
Total	27,582,484	100	27,404,471	100	+0.6

* 53 weeks

Slaughterings

2008	Slaughter pigs 50-110 kg	Sows more than 110 kg	Total
January	2,104,162	56,854	2,161,016
February	1,805,794	43,398	1,849,192
March	1,606,274	31,344	1,637,618
April	2,001,409	40,505	2,041,914
May	1,520,717	34,767	1,555,484
June	1,482,197	30,425	1,512,622
July	1,840,489	39,698	1,880,187
August	1,434,874	31,925	1,466,799
September	1,568,069	34,885	1,602,954
October	1,950,943	41,872	1,992,815
November	1,636,318	33,858	1,670,176
December	1,659,497	33,942	1,693,439
Jan. - dec.	20,610,743	453,473	21,064,216

2009	Slaughter pigs 50-110 kg	Sows more than 110 kg	Total
January	1,686,465	36,216	1,722,681
February	1,536,365	31,841	1,568,206
March	1,847,289	41,275	1,888,564
April	1,306,441	32,019	1,338,460
May	1,382,166	33,270	1,415,436
June	1,670,963	41,298	1,712,261
July	1,373,493	32,565	1,406,058
August	1,406,007	33,971	1,439,978
September	1,883,208	44,031	1,927,239
October	1,516,548	35,498	1,552,046
November	1,587,741	36,187	1,623,928
December	1,658,091	35,643	1,693,734
Jan. - dec.	18,854,777	433,814	19,288,591

Source: Reports to Production Levy

Structure of Slaughterhouses

Number of slaughterhouses (DS-members)

DS-members:	End year:				
	1970	1980	1990	2008	2009
Cooperatives	50	18	5	2	2
Private owned	4	2	1	0	0
Total slaughterhouses	54	20	6	2	2

Not DS-members:

Private*			7	11	10
-----------------	--	--	----------	-----------	-----------

* Slaughterhouses with more than 10,000 pigs per year. No figures in 1970 and 1980 are available.



Pig Slaughtering in EU and Selected Countries

M head	2008	2009 ¹⁾	2010 ²⁾	%-change 2010:2009
Germany	54.96	56.05	57.75	3.0
Spain	41.31	39.50	39.30	-0.5
France	25.72	25.36	25.18	-0.7
Poland	21.96	19.05	19.55	2.6
Denmark	20.79	19.65	19.75	0.5
Netherlands	14.35	14.20	14.25	0.4
Italy	13.62	13.70	13.60	-0.7
Bel./Lux	11.31	11.20	11.08	-1.1
UK	9.43	9.75	10.00	2.6
Romania	5.81	5.75	5.80	0.9
Austria	5.55	5.33	5.24	-1.7
Portugal	5.98	6.30	6.17	-2.1
Hungary	4.99	4.35	4.25	-2.3
Czech Rep	3.80	3.09	2.75	-11.0
Sweden	3.07	3.00	2.97	-1.0
Ireland	2.58	2.44	2.47	1.2
Finland	2.46	2.36	2.23	-5.5
Greece	1.91	1.87	1.85	-1.1
Bulgaria	0.57	0.55	0.53	-3.6
Slovenia	1.00	0.98	1.02	4.1
Lithuania	0.94	0.90	0.86	-4.4
Cyprus	0.73	0.73	0.73	0.0
Estonia	0.50	0.51	0.50	-2.0
Latvia	0.50	0.52	0.46	-11.5
Slovenia	0.40	0.38	0.31	-18.4
Malta	0.10	0.10	0.10	0.0
EU-27	254.34	247.48	248.63	0.5
Brazil	37.74	39.38	40.36	2.5
Canada	21.61	22.00	22.35	1.6
USA	116.50	113.50	110.00	-3.1
Russia	37.10	38.00	39.00	2.6
Japan	16.20	16.67	16.48	-1.1
China	609.60	610.17	657.84	7.8

¹⁾ Provisional ²⁾ Forecast Source: GIRA

The figures include slaughtering of pigs, i.e. imported pigs are included.

Number of Workers Employed in the Slaughterhouses

Number of workers employed at the slaughterhouses

Average per month	2005	2006	2007	2008	2009
January	12,300	11,200	10,200	10,800	9,000
February	12,150	11,200	10,300	10,900	9,000
March	12,100	10,900	10,300	10,900	8,900
April	12,200	11,100	10,200	10,700	8,900
May	12,300	11,100	10,800	10,600	8,900
June	12,300	11,300	10,900	10,500	8,800
July	12,300	11,300	11,100	10,000	8,700
August	12,000	11,000	11,000	9,700	8,600
September	11,500	10,700	10,800	9,000	8,300
October	11,300	10,700	10,600	8,800	8,000
November	11,400	10,400	10,800	9,000	8,100
December	11,700	10,300	10,900	9,200	7,900
Total year	12,000	10,900	10,700	10,000	8,600

Source: Dansk Industri

Average wages for Danish slaughterhouse workers

	DKK/hour*	Index 1980=100
2002	205.46	304
2003	213.25	316
2004	217.66	322
2005	223.83	331
2006	227.29	336
2007	240.62	356
2008	251.03	371
2009	255.49	379

* Including holiday pay and sickness benefit.

Source: Dansk Industri

Earnings of employees. Annual percentage increase (Industry)

	Denmark	Germany	Sweden	UK	Netherlands	USA
2003	4.4	2.4	3.0	3.5	4.9	4.4
2004	3.4	2.0	2.7	3.7	4.2	4.8
2005	2.7	1.1	3.0	3.6	1.7	3.5
2006	3.0	0.8	3.0	5.1	3.2	1.8
2007	4.1	0.9	3.7	3.6	3.3	1.9
2008	4.2	2.9	3.9	2.9	4.3	2.3
2009	2.6	1.7**	1.8	1.6	1.8**	1.3

** 2009-figures are based on the 3 first quarters

Source: Danmarks Statistik

Producer Pig Price and Economy



Producer Pig Prices

Payment to the producer

DKK/kg	Average Pig Price*	Bonus payment	Value of payment to producer accounts	Production levy	Total
2007	8.44	0.60	0.10	(0.07)	9.07
2008	9.31	0.45	0.10	(0.07)	9.79
2009	8.76	0.55	0.11	(0.05)	9.37

* After weight- and meatpercentage payment, and incl. discounts at transport.

Producer pig prices

Producer pig prices DKK/kg, Danish Crown (best weight group)

Week	2007	2008	2009	Week	2007	2008	2009
1	8.40	8.10	9.00	27	8.70	10.10	9.80
2	8.40	8.10	8.80	28	8.70	10.10	10.00
3	8.40	8.10	8.80	29	8.90	10.10	9.80
4	8.40	8.10	8.60	30	8.90	10.30	9.80
5	8.40	8.10	8.40	31	8.90	10.30	9.80
6	8.40	8.10	8.40	32	8.90	10.50	9.60
7	8.40	8.10	8.20	33	8.90	10.50	9.60
8	8.40	8.30	8.20	34	8.90	10.70	9.60
9	8.40	8.50	8.20	35	8.90	10.70	9.60
10	8.40	8.70	8.20	36	9.10	10.70	9.60
11	8.40	8.90	8.20	37	9.10	10.90	9.60
12	8.20	8.90	8.20	38	9.10	10.90	9.60
13	8.00	8.90	8.40	39	9.10	10.70	9.40
14	8.00	9.10	8.60	40	8.90	10.50	9.20
15	8.00	9.30	8.80	41	8.90	10.50	9.00
16	8.00	9.30	9.00	42	8.70	10.30	8.80
17	8.20	9.10	9.00	43	8.50	10.30	8.60
18	8.20	9.30	9.20	44	8.50	10.10	8.60
19	8.40	9.30	9.20	45	8.50	9.80	8.40
20	8.40	9.50	9.20	46	8.50	9.60	8.60
21	8.20	9.70	9.20	47	8.50	9.40	8.60
22	8.20	9.70	9.40	48	8.50	9.40	8.80
23	8.20	9.90	9.60	49	8.50	9.40	8.80
24	8.40	10.10	9.60	50	8.30	9.20	8.80
25	8.70	10.10	9.60	51	8.10	9.20	8.40
26	8.70	10.10	9.80	52	8.10	9.00	8.00
				53			8.00
	Avg.	8.52	9.55	8.98			

Changes in payment for meat percentage and changes in payment in connection with transport of pigs to slaughterhouse, means that from week 25 2007 prices for Danish Crown have been raised with 0.30 DKK for slaughter pigs.

Economy in Pig Production

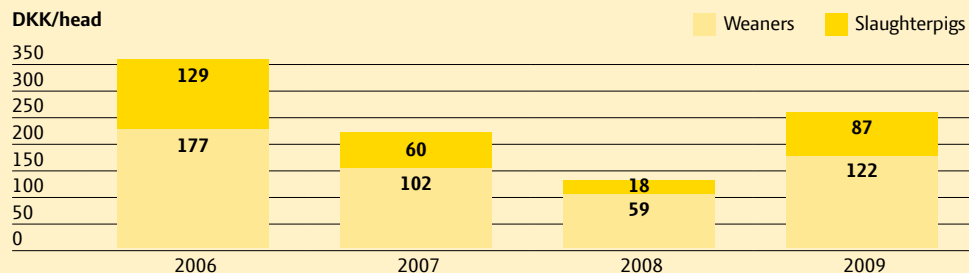
The ratio between the price for slaughter pigs and compound feeding stuff

Monthly ratio	2006	2007	2008	2009
January	6.74	6.79	3.97	4.68
February	6.89	6.77	3.84	4.77
March	6.83	6.55	4.18	4.84
April	7.12	6.38	4.32	5.27
May	7.44	6.64	4.46	5.76
June	7.78	6.60	4.75	6.06
July	7.95	6.66	4.81	6.22
August	8.05	6.61	5.13	6.23
September	8.13	4.95	5.47	6.55
October	7.81	4.49	5.32	6.18
November	7.44	4.26	4.93	6.14
December	7.12	4.18	4.80	6.04
Total year	7.44	5.91	4.67	5.73

The price of slaughter pigs = Danmarks Statistik price for slaughter pigs (excl. bonus).

The price of compound feeding stuff = Danmarks Statistik's prices for compound feeding stuff.

Gross margin 2006-2009



Source: Videncenter for Svineproduktion.

Social Importance of the Pig Industry

The total Danish pig production

Year	Tonnes	%-change from the year before	Value ab producer DKK M	%-change from the year before
2007	2,046,000	+4.5	18,051	-4.7
2008	1,985,000	-3.0	18,872	+4.5
2009	1,898,000	-4.4	18,296	-3.1

The production includes approved and discarded animals, slaughtered on the farms, exports of live animals and edible by-products.

Value of the Danish export

Year	Total export		Agricultural export		Animal agricultural export	
	DKK M	%-change from the year before	DKK M	%-change from the year before	DKK M	%-change from the year before
2007	551,306	+1.4	54,226	+0.6	44,345	-2.0
2008	585,798	+6.3	57,645	+6.7	48,477	+9.4
2009	492,641	-15.9	54,238	-5.9	45,593	-8.4

Export of pigmeat products

Year	Value DKK M	% -change from the year before	Share of pork export, percentage		
			Total export	Agricultural export	Animal agricultural export
2007	27,230	-5.3	5.0	49.8	60.1
2008	28,910	+6.2	4.9	50.0	59.6
2009	26,637	-7.9	5.4	49.1	58.4

All values include payments from the FEOPA.

Source: Danmarks Statistik

Export and Import of Pigmeat



Denmark's Export of Pigmeat

2009

Country	Tonnes	DKK M	Country	Tonnes	DKK M
Germany	562,024	6,592	Latvia	3,294	37
UK	286,675	4,781	Cyprus	3,217	45
Poland	171,445	2,021	Ukraine	3,092	15
Japan	129,845	3,404	Norway	3,035	91
China	130,933	713	Greenland	2,729	95
Italy	113,633	1,625	Hungary	1,977	38
Russia	96,807	1,285	Malaysia	1,849	20
Sweden	53,009	1,113	The Philippines	1,864	18
Netherlands	31,106	244	The Emirates	1,808	22
Australia	45,937	926	Argentina	1,795	12
USA	35,984	821	Slovenia	1,598	40
Hong Kong	25,575	257	Panama	1,507	32
France	18,345	366	Taiwan	1,495	26
Rep. of Korea	12,286	145	The Faroe Islands	1,389	44
Romania	12,278	144	Vietnam	1,171	17
Ireland	11,345	219	Canada	1,044	35
Czech Rep.	10,311	145	The Bahamas	1,031	14
Greece	9,450	173	Azerbaijan	966	8
Estonia	7,596	98	Austria	877	17
Portugal	7,112	155	Papua N. Guinea	811	20
Belgium	7,024	75	Mexico	793	11
Croatia	6,986	45	Thailand	702	4
Singapore	6,120	70	South Africa	698	7
Lithuania	5,832	70	New Caledonia	681	16
Spain	4,979	125	Malta	629	17
Finland	4,945	136	Other countries	2,451	144
Bulgaria	4,279	44	Total	1,854,364	26,636

Denmark's Export of Pigmeat (Tonnes)

2008

Tonnes	EU-27	3 rd countries	Total
Live pigs and sows	231,484	1,499	232,983
Bacon	102,190	1,056	103,246
Carcasses pigs/sows	79,187	161	79,348
Cuts	779,287	377,217	1,156,504
By-products	129,842	138,064	267,906
Canned meat	50,768	18,078	68,846
Other processed products	21,448	12,401	33,849
Total	1,394,206	548,476	1,942,682
%-share	71.8	28.2	100

2009

Tonnes	EU-27	3 rd countries	Total
Live pigs and sows	255,943	1,504	257,447
Bacon	100,239	1,197	101,436
Carcasses pigs/sows	76,897	229	77,126
Cuts	730,825	326,331	1,057,156
By-products	105,824	164,786	270,610
Canned meat	43,779	15,321	59,100
Other processed products	18,459	13,030	31,489
Total	1,331,966	522,398	1,854,364
%-share	71.8	28.2	100

Denmark's Export of Pigmeat (1000 DKK)

2008

1000 DKK	EU-27	3 rd countries	Total
Live pigs and sows	2,730,620	67,194	2,797,814
Bacon	2,237,369	38,297	2,275,666
Carcasses pigs/sows	902,698	1,968	904,666
Cuts	11,486,187	7,250,083	18,736,270
By-products	853,027	995,593	1,848,620
Canned meat	1,131,305	415,177	1,546,482
Other processed products	556,046	245,418	801,464
Total	19,897,252	9,013,730	28,910,982
%-share	68.8	31.2	100

Excl. payments from FEOGA: 142 DKK M

2009

1000 DKK	EU-27	3 rd countries	Total
Live pigs and sows	3,347,418	52,006	3,399,424
Bacon	1,990,617	40,257	2,030,874
Carcasses pigs/sows	816,438	4,140	820,578
Cuts	9,883,957	6,451,106	16,335,063
By-products	847,394	1,101,727	1,949,121
Canned meat	956,756	404,978	1,361,734
Other processed products	470,321	269,400	739,721
Total	18,312,900	8,323,615	26,636,515
%-share	68,8	31,2	100

Excl. payments from FEOGA: 10 DKK M

Denmarks Export of Pigmeat to EU Countries (Tonnes)

2008

Tonnes	Germany	UK	Italy	Other EU-countries	Total EU-27
Live pigs and sows	206,106	114	6,676	18,588	231,484
Bacon	1,096	92,838	2,876	5,380	102,190
Carcasses pigs/sows	66,255	36	1	12,895	79,187
Cuts	221,783	159,031	117,716	280,757	779,287
By-products	27,444	21,316	5,283	75,799	129,842
Canned meat	17,278	19,715	1,533	12,242	50,768
Other processed products	1,665	8,102	108	11,573	21,448
Total	541,627	301,152	134,193	417,234	1,394,206
%-share	38.8	21.6	9.6	29.9	100

2009

Tonnes	Germany	UK	Italy	Other EU-countries	Total EU-27
Live pigs and sows	218,027	106	9,784	28,026	255,943
Bacon	631	92,902	2,094	4,612	100,239
Carcasses pigs/sows	65,309	0	4	11,584	76,897
Cuts	231,732	153,928	96,093	249,072	730,825
By-products	29,217	17,289	4,505	54,813	105,824
Canned meat	16,246	15,161	1,075	11,297	43,779
Other processed products	861	7,288	79	10,231	18,459
Total	562,024	286,675	113,633	369,634	1,331,966
%-share	42.2	21.5	8.5	27.8	100

Denmark's Export of Pigmeat for EU Countries (1000 DKK)

2008

1000 DKK	Germany	UK	Italy	Other EU-countries	Total EU-27
Live pigs and sows	2,370,430	7,583	112,567	240,040	2,730,620
Bacon	33,146	1,981,376	72,906	149,941	2,237,369
Carcasses pigs/sows	727,753	479	16	174,450	902,698
Cuts	2,859,224	2,629,771	1,672,779	4,324,413	11,486,187
By-products	186,596	155,433	92,342	418,656	853,027
Canned meat	345,360	472,092	25,904	287,949	1,131,305
Other processed products	43,174	213,332	2,792	296,748	556,046
Total	6,565,682	5,460,067	1,979,307	5,892,196	19,897,252
%-share	33.0	27.4	9.9	29.6	100

2009

1.000 kr.	Germany	UK	Italy	Other EU-countries	Total EU-27
Live pigs and sows	2,745,568	7,360	184,663	409,827	3,347,418
Bacon	20,775	1,796,108	51,823	121,911	1,990,617
Carcasses pigs/sows	680,327	0	64	136,047	816,438
Cuts	2,613,368	2,329,143	1,288,304	3,653,142	9,883,957
By-products	199,174	121,101	79,903	447,216	847,394
Canned meat	311,853	341,707	18,469	284,727	956,756
Other processed products	21,227	185,657	1,863	261,574	470,321
Total	6,592,294	4,781,076	1,625,091	5,314,439	18,312,900
%-share	36.0	26.1	8.9	29.0	100

Denmarks Export of Pigmeat for 3rd Countries (Tonnes)

2008

Tonnes	Russia	Japan	USA	Other 3 rd countries	Total 3 rd countries
Live pigs and sows	1,148	2		349	1,499
Bacon	101		42	913	1,056
Carcasses pigs/sows		2		159	161
Cuts	84,549	159,100	35,564	98,004	377,217
By-products	17,890	325	1,833	118,016	138,064
Canned meat	508	4,040	870	12,660	18,078
Other processed products	473	1,558	1,075	9,295	12,401
Total	104,669	165,027	39,384	239,396	548,476
%-share	19.1	30.1	7.2	43.6	100

2009

Tons	Russia	Japan	USA	Other 3 rd countries	Total 3 rd countries
Live pigs and sows	1,146	1		357	1,504
Bacon	73		40	1,084	1,197
Carcasses pigs/sows	211	1		17	229
Cuts	80,204	125,280	31,048	89,799	326,331
By-products	14,070	134	1,979	148,603	164,786
Canned meat	751	3,201	1,760	9,609	15,321
Other processed products	352	1,229	1,157	10,292	13,030
Total	96,807	129,845	35,984	259,762	522,398
%-share	18.5	24.9	6.9	49.7	100

Denmarks Export of Pigmeat for 3rd Countries (1000 DKK)

2008

1000 DKK	Russia	Japan	USA	Other 3 rd countries	Total 3 rd countries
Live pigs and sows	52,875	954		13,365	67,194
Bacon	6,021		1,128	31,148	38,297
Carcasses pigs/sows		46		1,922	1,968
Cuts	1,197,850	3,726,965	764,624	1,560,644	7,250,083
By-products	135,379	5,793	18,110	836,311	995,593
Canned meat	12,295	90,364	22,187	290,331	415,177
Other processed products	12,535	37,199	27,588	168,096	245,418
Total	1,416,955	3,861,320	833,638	2,901,817	9,013,730
%-share	15.7	42.8	9.2	32.2	100

2009

1.000 kr.	Russia	Japan	USA	Other 3 rd countries	Total 3 rd countries
Live pigs and sows	38,495	583		12,928	52,006
Bacon	4,698	25	1,263	34,271	40,257
Carcasses pigs/sows	3922			218	4,140
Cuts	1,105,623	3,273,775	717,394	1,354,314	6,451,106
By-products	106,856	3,940	19,858	971,073	1,101,727
Canned meat	15,358	89,472	49,257	250,891	404,978
Other processed products	10,211	36,509	32,829	189,851	269,400
Total	1,285,163	3,404,303	820,601	2,813,548	8,323,615
%-share	15.4	40.9	9.9	33.8	100

Trend in Pigmeat Export

Products

Tonnes	1988	1998	2008	2009
Live pigs and sows	763	86,921	232,983	257,447
Bacon	116,897	127,401	103,246	101,436
Carcasses pigs/sows	13,862	52,609	79,348	77,126
Cuts	447,149	806,350	1,156,504	1,057,156
By-products	91,321	162,145	267,906	270,610
Canned meat	160,697	110,699	68,846	59,100
Other processed products	31,338	50,849	33,849	31,489
Total	862,026	1,396,974	1,942,682	1,854,364

1000 DKK	1988	1998	2008	2009
Live pigs and sows	14,309	822,313	2,797,814	3,399,424
Bacon	2,266,380	2,317,542	2,275,666	2,030,874
Carcasses pigs/sows	150,363	373,193	904,666	820,578
Cuts	8,653,467	12,735,513	18,736,270	16,335,063
By-products	718,672	1,054,700	1,848,620	1,949,121
Canned meat	3,255,846	2,239,564	1,546,482	1,361,734
Other processed products	515,263	1,039,280	801,464	739,721
Total	15,574,303	20,582,104	28,910,982	26,636,515
<i>Excl. payments from FEOGA</i>	<i>1,184 M DKK</i>	<i>174 M DKK</i>	<i>142 M DKK</i>	<i>10 M DKK</i>

Trend in Pigmeat Export

Main countries

Tonnes	1988	1998	2008	2009
UK	244,238	247,519	301,152	286,675
Germany	97,678	304,574	541,626	562,024
France	86,542	98,805	20,557	18,345
Italy	71,145	113,486	134,193	113,633
Other EU-countries	23,135	142,367	396,678	351,289
EU Total*	522,738	906,751	1,394,206	1,331,966
USA	108,531	58,135	39,385	35,984
Japan	136,240	141,705	165,027	129,845
Other countries	94,517	290,382	344,065	356,569
3 rd countries Total	339,288	490,222	548,477	522,398
Total	862,026	1,396,974	1,942,682	1,854,364

1000 DKK	1988	1998	2008	2009
UK	3,939,334	3,894,373	5,460,067	4,781,076
Germany	1,629,476	3,752,309	6,565,682	6,592,294
France	1,383,959	1,356,921	369,308	365,630
Italy	1,057,682	1,500,932	1,979,307	1,625,091
Other EU-countries	316,559	2,098,921	5,522,888	4,948,809
EU Total*	8,327,010	12,603,456	19,897,252	18,312,900
USA	1,966,776	1,239,132	833,638	820,601
Japan	4,004,469	3,477,438	3,861,320	3,404,303
Other countries	1,276,048	3,262,077	4,318,772	4,098,711
3 rd countries Total	7,247,293	7,978,647	9,013,730	8,323,615
Total	15,574,303	20,582,104	28,910,982	26,636,515
<i>Excl. FEOGA payments:</i>	<i>1,184 M DKK</i>	<i>174 M DKK</i>	<i>142 M DKK</i>	<i>10 M DKK</i>

* From 2007 EU-27.

Export of Live Pigs from Denmark

2008	Weaners				
	0-15 kg.	15-50 kg	Slaughter pigs	Sows	Total
Head					
January	23,444	424,011	98,692	23,716	569,863
February	26,301	382,072	62,973	18,060	489,406
March	28,186	364,167	60,591	15,217	468,161
April	20,158	378,116	56,226	16,094	470,594
May	20,751	387,158	56,697	14,736	479,342
June	25,619	400,171	51,381	15,883	493,054
July	23,799	393,271	73,482	12,496	503,048
August	31,589	387,740	79,128	14,061	512,518
September	29,879	435,763	98,767	30,636	595,045
October	37,566	414,847	74,757	13,776	540,946
November	30,327	444,923	66,526	11,910	553,686
December	39,379	531,021	80,561	13,631	664,592
Jan. - Dec.	336,998	4,943,260	859,781	200,216	6,340,255

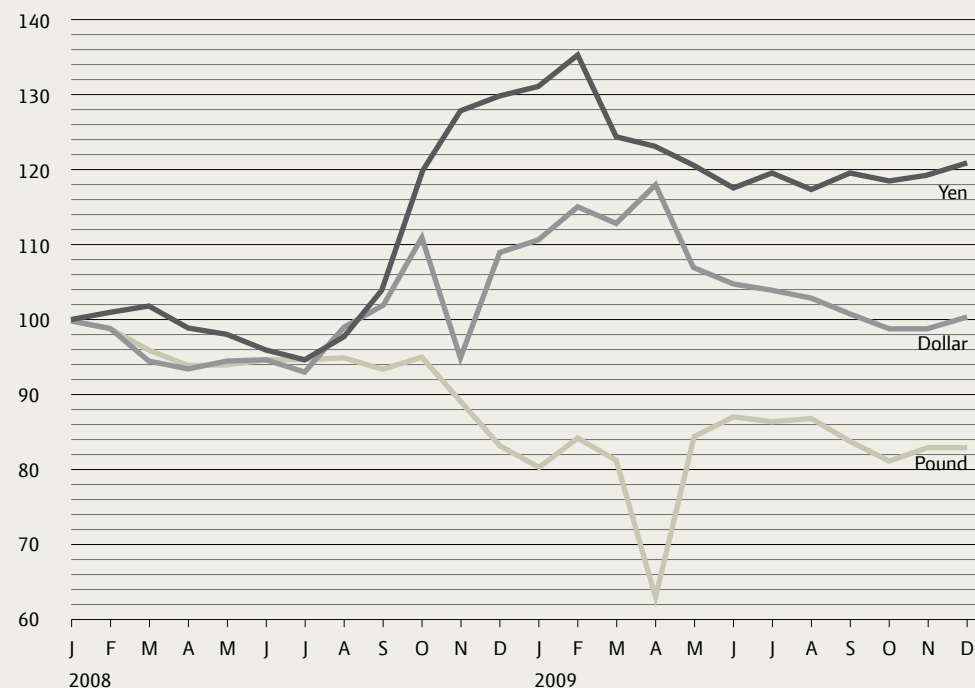
2009	Weaners				
	0-15 kg.	15-50 kg	Slaughter pigs	Sows	Total
Head					
January	32,886	531,476	114,233	14,670	693,265
February	32,181	456,198	92,693	13,127	594,199
March	30,960	594,198	94,979	14,788	734,925
April	39,280	603,553	99,626	11,820	754,279
May	31,384	560,625	84,895	13,781	690,685
June	32,889	578,472	96,638	14,660	722,659
July	34,788	552,877	97,846	12,200	697,711
August	32,794	528,791	91,207	10,480	663,272
September	32,770	572,231	89,221	8,388	702,610
October	34,992	533,174	71,412	9,141	648,719
November	24,110	557,967	85,838	9,494	677,409
December	42,201	572,923	88,729	10,307	714,160
Jan. - Dec.	401,235	6,642,485	1,107,317	142,856	8,293,893

Source: Report to Production Levy

The Development in Rate of Exchange

DKK per 100 units	Pound		Dollar		Yen	
	2008	2009	2008	2009	2008	2009
January	996.46	800.49	506.01	560.04	4.67	6.16
February	990.67	840.99	503.10	582.03	4.72	6.32
March	960.47	810.61	478.21	572.13	4.76	5.82
April	937.04	633.37	473.48	598.10	4.62	5.76
May	939.89	842.79	478.29	545.61	4.60	5.64
June	941.61	869.54	479.84	530.35	4.49	5.50
July	940.88	863.60	471.69	527.54	4.44	5.59
August	943.95	866.32	500.32	522.66	4.58	5.49
September	931.34	834.93	518.00	511.78	4.87	5.59
October	952.01	807.89	562.29	501.02	5.62	5.55
November	889.22	829.96	483.75	500.56	5.99	5.59
December	824.59	825.33	554.59	509.19	6.07	5.68

Index
January 2008 = 100



Denmark's Import of Pigmeat

2008

Tonnes	Germany	Sweden	Other EU-27	Other countries	Total
Live pigs and sows	860		1,362		2,222
Bacon	9,547	708	6,244	6	16,505
Carcasses pigs/sows	61	40	109		210
Cuts	25,288	1880	21,381	750	49,299
By-products	32,342	7,916	22,837	2,419	65,514
Canned meat	8,180	640	18,613	19	27,452
Other processed products	12,062	652	5,230	97	18,041
Total	88,340	11,835	75,777	3,291	179,243
%-share	49.3	6.6	42.3	1.8	100

2009

Tonnes	Germany	Sweden	Other EU-27	Other countries	Total
Live pigs and sows	67				67
Bacon	9,216	738	7,769	7	17,730
Carcasses pigs/sows		26	15		41
Cuts	36,489	1,128	18,629	975	57,221
By-products	36,683	3,813	17,346	5,769	63,611
Canned meat	9,835	779	10,161	6	20,781
Other processed products	13,098	1,891	5,605	125	20,719
Total	105,390	8,377	59,522	6,881	180,170
%-share	58.5	4.6	33.0	3.8	100

EU's Export to 3rd Countries

Products

Tonnes (product weight)	2007 EU-27	2008 EU-27	2009 EU-27
Live pigs	40,913	95,322	151,188
Cuts	871,604	1,172,239	949,796
Bacon	24,856	26,819	26,436
Other processed products	101,476	101,741	101,897
Canned meat	61,932	65,561	54,270
By-products	809,914	1,107,405	1,100,949
Total	1,910,695	2,569,087	2,384,536

Source: EUROSTAT, Luxembourg.

Main countries

Tonnes	Export countries		Import countries	
	2008 EU-27	2009 EU-27	2008 EU-27	2009 EU-27
Denmark	534,875	510,295	Russia	769,044
Germany	533,193	573,406	Hong Kong	462,299
France	214,106	192,471	Japan	236,609
Netherlands	281,805	218,041	China	147,951
Poland	234,177	183,304	Rep. of Korea	115,757
Spain	230,964	183,394	Croatia	63,426
Belgium	105,843	118,447	USA	61,471
Italy	71,629	67,916	Australia	45,621
Austria	69,774	56,175	Angola	49,003
Lithuania	42,738	51,171	The Philippines	40,912
Hungary	49,455	45,201	The Ivory Coast	17,209
Portugal	42,018	37,712	Other	559,787
UK	35,010	34,396		
Finland	37,812	34,031		
Other	85,688	78,576		
Total	2,569,087	2,384,536	2,569,087	2,384,536

Source: EUROSTAT, Luxembourg.

USA and Japan's Trade in Pigmeat

USA's import

Tonnes	Fresh/frozen	Processed products	Total 2009	Total 2008
Canada	253,271	42,916	296,187	280,379
Denmark	33,658	1,870	24,528	36,837
Other countries	11,300	14,695	25,995	33,028
I alt	297,229	59,481	356,710	350,244

USA's export

Tonnes	Fresh/frozen	Processed products	Total 2009	Total 2008
Japan	391,847	8,706	400,553	425,313
Mexico	274,200	60,181	334,381	253,786
Canada	112,818	41,401	154,219	160,595
China incl. H.K	112,287	7,419	119,706	259,357
Rep. of Korea	83,948	4,621	88,869	98,026
Russia	89,695	13,110	102,805	142,609
Taiwan	27,058	336	27,394	19,092
Other countries	161,829	19,918	181,747	212,987
Total	1,253,682	155,692	1,409,674	1,571,765

The above-mentioned figures are excl. offal and by-products

Source: USDA, Washington

Japan's import Fresh/frozen pigmeat

Tonnes	2006	2007	2008	2009
USA	252,254	270,616	336,973	288,664
Canada	151,626	165,529	174,632	172,334
Denmark	168,037	161,356	159,784	122,923
Other countries	152,885	162,782	146,228	118,963
Total	724,802	760,283	817,617	702,884

Source: Ministry of Agriculture, Japan



Common Agricultural Policy and Export Refunds



Common Agricultural Policy and Export Refunds

Subsidies for private storing

Year	Period
1999	1/1 - 10/9
2000	None
2001	None
2002	9/12 - 31/12
2003	1/1 - 6/2
2004	1/1 - 22/1
2005	None
2006	None
2007	29/10 - 27/11
2008	None
2009	None

Export refunds

Fresh, chilled and frozen cuts

Export refunds 2009 DKK/kg	Hams, shoulders/ fore ends and loins with bones	Bellies with rind	Deboned hams, shoulders/fore ends and loins excl. Japan products	Bellies without rind and bone excl. Japan products
General	0	0	0	0

Processed products

Export refunds 2009 DKK/kg	Dried sausages	Cooked sausages	Cooked hams*	Cooked shoulders	Luncheon meat
General: Total year	1.45	1.13	2.16/1.27	1.70/1.27	0

* o/u 1 kg

Consumer Prices of Pigmeat in Denmark

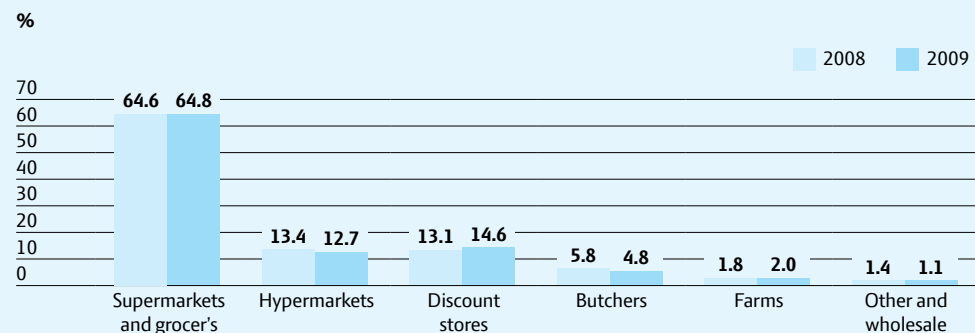
Consumption and Prices

DKK/kg	Tenderloin	Cuts from loin	Bellies	Cuts from ham	Minced pigmeat
1. Quarter	76.97	50.08	43.65	66.95	40.18
2. Quarter	71.39	51.81	47.79	64.69	40.45
3. Quarter	67.91	49.16	43.27	64.15	40.59
4. Quarter	67.96	40.02	37.11	57.49	38.32
Total year 2009	70.62	46.70	42.73	63.43	39.85
Total year 2008	74.23	49.91	44.99	68.19	41.12

Source: GfK Denmark A/S, ConsumerScan



Sale of Fresh/Frozen Meat from Different Types of Shops



Source: GfK Denmark A/S, ConsumerScan

Consumption of Meat in the EU

Kg per capita	1999			2009		
	Pigmeat	Beef	Poultry	Pigmeat	Beef	Poultry
Germany	56.9	15.2	15.3	53.2	12.7	18.8
France	36.3	27.0	24.2	34.0	25.5	24.3
Italy	36.6	26.0	19.3	37.4	22.8	18.6
Netherlands	43.6	19.7	21.5	41.1	19.2	23.0
UK	23.6	16.9	29.1	22.7	19.1	31.2
Belgium/Lux.	44.2	21.5	21.2	39.0	18.6	19.3
Ireland	41.2	20.6	34.8	28.3	19.6	26.6
Denmark	65.7	25.7	17.6*	53.7	24.7	22.5**
Greece	31.0	18.3	19.7	30.2	15.7	19.7
Spain	65.4	16.1	26.7	50.4	12.9	24.1
Portugal	40.9	16.8	30.1	42.6	16.3	35.8
Austria	58.5	19.5	17.6	54.0	17.3	21.2
Sweden	36.6	21.4	11.2	33.3	24.5	14.7
Finland	34.6	19.0	12.6	35.0	17.8	19.0
Total EU-15	43.7	20.1	21.7	39.8	18.7	22.7
Total EU-27				40.0	16.5	22.8

* 1998-numbers ** 2007-numbers Source: GIRA

The official figures for meat available for consumption shows the statistics calculated quantity available in the market, However the real consumption of pigmeat in Denmark differs substantially from the statistical quantity available, Different official surveys prove that the real consumption is half the quantity shown in official supply statistics.



Agriculture & Food

Axelborg, Axeltorv 3
DK-1609 København V

T +45 3339 4000
F +45 3339 4141

E info@lf.dk
W www.lf.dk