

STATISTICS 2011

PIGMEAT



Table of Content

STRUCTURE OF PIG PRODUCERS AND PIG HERD IN DENMARK

Structure of Suppliers in Denmark	3
Structure of Pig Herd in Denmark	5

PIG POPULATION AND PRODUCTION

Pig Population in Denmark	7
Development in the Pig Herd	8
Production of Pigs in Denmark	9
World Pigmeat Production and Pig Population in Selected Countries	10
EU's Supply Balance with Pigmeat	11
Supply Balance of Pigmeat in Selected Countries	11

SLAUGHTERHOUSES

Supplies of Pigs for Slaughter in Denmark and Exports	13
Structure of Slaughterhouses	14
Pig Slaughtering in EU and Selected Countries	16
Employment and Wages	17

PRODUCER PIG PRICES AND ECONOMY

Producer Pig Prices	19
Economy in Pig Production	20
Social Importance of the Pig Industry	21

EXPORT AND IMPORT OF PIGMEAT

Denmark's Export of Pigmeat	23
Denmark's Export of Pigmeat for EU	26
Denmark's Export of Pigmeat for 3 rd countries	28
Trend in Pigmeat Export	30
Export of Live Pigs from Denmark	32
The Development in Rate of Exchange	33
Denmark's Import of Pigmeat	34
EU's Export to 3 rd Countries	35
USA and Japan's Trade in Pigmeat	36

COMMON AGRICULTURAL POLICY AND EXPORT REFUNDS

Export Refunds	39
----------------	----

CONSUMPTION AND PRICES

Consumer Prices of Pigmeat in Denmark	41
Sale of Fresh/Frozen Meat from Different Types of Shops	42
Consumption of Meat in the EU	43

Structure of Pig Producers and Pig Herd in Denmark



Structure of Suppliers in Denmark

Slaughterpigs

1991 Number of pigs per supplier		Number of suppliers	% of all suppliers	Number of pigs	% of all pigs
1 -	200 head	18,181	57.0	1,044,356	6.7
201 -	500 head	5,192	16.3	1,673,255	10.8
501 -	1,000 head	3,707	11.6	2,633,655	16.9
1,001 -	2,000 head	2,975	9.3	4,079,710	26.2
2,001 -	3,000 head	1,035	3.3	2,492,620	16.0
3,001 -	4,000 head	437	1.4	1,473,195	9.5
4,001 -	5,000 head	158	0.5	681,826	4.4
5,001 -	10,000 head	195	0.6	1,285,639	8.3
10,001 -		14	-	181,347	1.2
Total		31,894	100	15,545,603	100

2001 Number of pigs per supplier		Number of suppliers	% of all suppliers	Number of pigs	% of all pigs
1 -	200 head	5,388	37.5	333,092	1.6
201 -	500 head	1,836	12.8	600,469	3.0
501 -	1,000 head	1,612	11.2	1,173,185	5.8
1,001 -	2,000 head	2,083	14.5	2,999,798	14.8
2,001 -	3,000 head	1,281	8.9	3,120,920	15.5
3,001 -	4,000 head	791	5.5	2,757,636	13.7
4,001 -	5,000 head	521	3.6	2,320,053	11.5
5,001 -	10,000 head	739	5.1	4,892,810	24.2
10,001 -		136	0.9	1,996,459	9.9
Total		14,387	100	20,194,422	100

2011 Number of pigs per supplier		Number of suppliers	% of all suppliers	Number of pigs	% of all pigs
1 -	200 head	620	15.0	50,788	0.3
201 -	500 head	337	8.2	114,084	0.6
501 -	1,000 head	348	8.4	255,384	1.4
1,001 -	2,000 head	510	12.3	753,948	4.3
2,001 -	3,000 head	441	10.7	1,095,073	6.2
3,001 -	4,000 head	380	9.2	1,324,713	7.5
4,001 -	5,000 head	270	6.5	1,206,480	6.8
5,001 -	10,000 head	801	19.4	5,688,046	32.2
10,001 -	20,000 head	347	8.4	4,738,623	26.8
20,001 -		80	1.9	2,458,780	13.9
Total		4,134	100	17,685,919	100

The statistical figures are based on reports from individual coop slaughterhouses for the financial year.

Structure of Pig Herd in Denmark

Specialisation of the Pig Herd

	1991	2001	2011
Number of farms	75,476	53,489	40,660
Number of farms with pigs	27,733	12,936	4,642
Of which:			
With pigs and sows	13,644	5,677	1,808
With pigs only	6,998	5,056	2,046
With sows only	5,444	1,529	549

Source: Danmarks Statistik

Danmarks Statistik defines a slaughter pig as one of 50 kg and upwards. Farms with pigs less than 50 kg and without sows are accordingly not included in the above table. This is why the 3 categories for farms do not add up to the number of farms with pigs.

Pigs and sows by size of herd

Pigs %	Number of farms		Number of pigs		Sows %	Number of farms		Number of sows	
	2010	2011	2010	2011		2010	2011	2010	2011
1 - 49 head	10.8	11.1	0.1	0.0	1 - 4 head	9.3	10.9	0.0	0.0
50 - 199 head	5.6	5.2	0.2	0.2	5 - 19 head	5.6	5.5	0.1	0.1
200 - 499 head	7.7	7.4	1.0	0.9	20 - 49 head	3.2	2.2	0.2	0.2
500 - 999 head	11.1	10.4	3.2	2.8	50 - 99 head	4.3	3.9	0.8	0.7
1,000 - 1,999 head	19.4	18.8	10.9	9.9	100 - 199 head	9.3	8.7	3.2	2.9
2,000 - 2,999 head	13.2	13.3	12.4	11.7	200 - 299 head	11.4	10.3	6.5	5.7
3,000 - 3,999 head	9.5	8.9	12.7	11.1	300 - 399 head	11.8	11.4	9.5	8.7
4,000 - 4,999 head	6.6	7.1	11.4	11.3	400 - 499 head	10.0	10.3	10.3	10.3
5,000 - 5,999 head	5.6	5.4	11.8	10.7	500 - 599 head	7.9	8.8	10.0	10.6
6,000 - 6,999 head	3.0	3.8	7.5	8.8	600 - 699 head	8.5	8.2	12.7	11.7
7,000 - 7,999 head	1.9	2.2	5.5	5.8	700 - 799 head	5.1	5.5	8.7	9.0
8,000 -	5.5	6.5	23.3	26.8	800 -	13.6	14.5	38.0	40.1
Total	100	100	100	100	Total	100	100	100	100

Source: Danmarks Statistik



Pig Population and Production



Pig Population in Denmark

2011

1000 head	1 Jan.	1 April	1 July	1 Oct.
Gilts in pig	203	193	192	195
Other sows in pig	604	592	605	613
Total sows in pig	807	785	797	808
Boars	11	9	9	12
Sows with piglets	210	211	212	216
Dry sows	40	38	38	41
Cullud sows and boars for slaughter	9	7	6	6
Gilts (over 50 kg) for breeding	239	211	217	211
Piglets	2,411	2,462	2,493	2,545
Weaners < 50 kg	5,204	5,156	5,417	5,441
Slaughter pigs over 50 kg	3,374	3,053	3,360	3,413
Total pig population	12,293	11,932	12,549	12,693

The census is based on a sample of about 3,500 farms.

Percentage distribution of pig population in counties (June census)

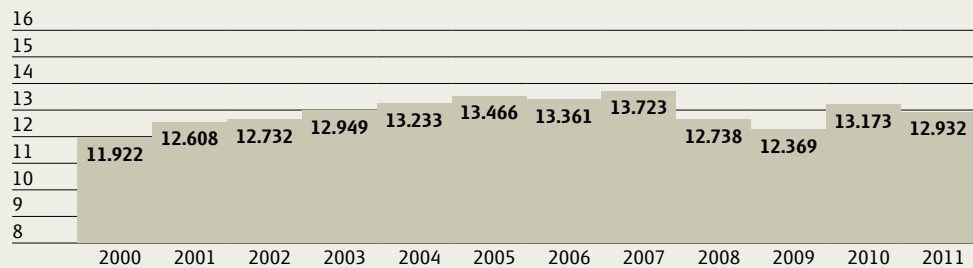
County	2010	2011
Copenhagen and Nordsjælland	0.3	0.3
Bornholm	2.0	2.2
Region Sjælland	10.4	10.4
Fyn	9.9	9.6
Syddjylland	20.1	20.1
Østjylland	15.8	15.9
Vestjylland	19.4	18.6
Nordjylland	22.1	22.9
Total Denmark	100	100

Source: Danmarks Statistik

Development in the Pig Herd

Development in the pig herd

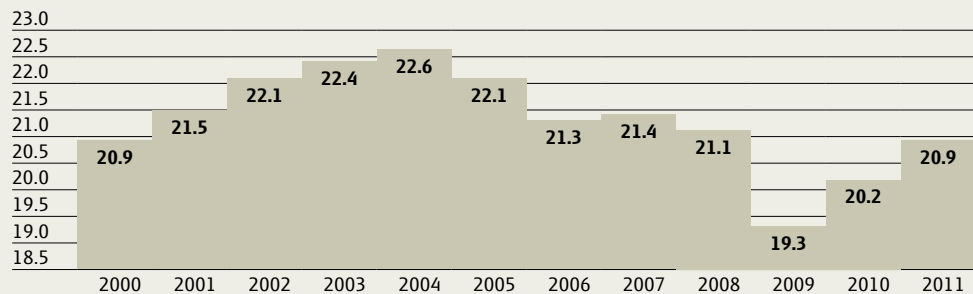
M head



The figures are from Danmarks Statistik's pig census in June.

Development in slaughterings

M head



The slaughtering includes slaughtering of pigs at the cooperative slaughterhouses, private slaughterhouses, public slaughterhouses and private butchers in Denmark.

Production of Pigs in Denmark

M head	2008	2009	2010	2011
Slaughtering in Denmark	21.1*	19.3	20.2	20.9
Export of slaughter pigs and sows	1.1	1.3	0.9	0.5
Danish production of slaughter pigs and sows	22.2	20.6	21.1	21.4
Export of piglets	5.3	7.0	7.5	8.0
Total	27.5	27.6	28.6	29.4

* 53 weeks



World Pigmeat Production and Pig Population in Selected Countries

	Pigmeat production 1,000 tonnes		Pig population M head	
	2010	2011 ¹⁾	2010	2011 ¹⁾
Germany	4,941	5,035	26.5	26.7
Spain	3,527	3,527	24.7	25.5
France	2,312	2,301	14.1	13.8
Poland	1,811	1,783	14.0	13.1
Italy	1,577	1,570	9.3	9.3
Denmark	1,888	1,931	12.2	11.9
Netherlands	1,800	1,818	12.3	12.4
Belgium/Luxembourg	1,114	1,127	6.4	6.3
UK	771	803	4.5	4.5
Austria	507	519	3.1	3.1
Hungary	340	322	3.2	3.1
Rumania	393	378	4.7	4.6
Portugal	310	315	2.3	2.2
Czech. Rep.	267	258	1.9	1.8
Sweden	264	262	1.6	1.5
Finland	197	195	1.4	1.3
Ireland	219	221	1.5	1.6
Greece	115	115	1.1	1.1
Bulgaria	69	69	0.7	0.7
Other EU-27 countries	350	334	3.0	2.9
EU-27 total	22,772	22,883	148.5	147.2
China (incl. Hong Kong)	51,070	49,700	470.0	477.2
USA	10,177	10,289	64.9	64.9
Brazil	3,220	3,260	39.5	39.6
Russia	2,331	2,400	17.2	17.2
Canada	1,926	1,136	11.8	11.9
Mexico	1,175	1,180	15.3	15.4
Japan	1,291	1,260	10.0	9.8
Rep. Of Korea	1,110	835	9.6	9.9
Ukraine	630	650	7.6	7.9
Total selected countries	95,702	93,593	794.3	800.9

¹⁾ Provisional figures Source: GIRA

EU's Supply Balance with Pigmeat

	2010 EU-27	2011 ¹⁾ EU-27	2012 ²⁾ EU-27
1,000 tonnes (deadweight)			
Production (GIP)	22,219	22,513	22,523
Import (cwe)	22	15	15
Export (cwe)	1,839	2,714	2,000
Stocks	0	0	0
Consumption	20,402	20,355	20,538
Self sufficiency, %	109.3	110.9	109.9

¹⁾ Provisional ²⁾ Forecast Source: Eurostat and GIRA

Supply Balance of Pigmeat in Selected Countries

(Excl. stocks), 1,000 tonnes (CWE)

2009	Canada	USA	Mexico	China*	Brazil	Russia	Japan
Production	1,789	10,442	1,162	48,905	3,130	1,844	1,310
Import	180	378	678	270	0	845	1,138
Export	1,123	1,857	70	232	707	1	1
Consumption	854	9,013	1,770	48,823	2,423	2,688	2,467

2010	Canada	USA	Mexico	China*	Brazil	Russia	Japan
Production	1,772	10,187	1,165	51,070	3,195	1,920	1,291
Import	183	390	687	355	1	854	1,198
Export	1,159	1,917	78	278	619	1	1
Consumption	807	8,653	1,774	51,097	2,577	2,773	2,485

2011 ¹⁾	Canada	USA	Mexico	China*	Brazil	Russia	Japan
Production	1,745	10,259	1,195	52,500	3,275	1,910	1,285
Import	220	413	695	410	1	855	1,210
Export	1.18	2,121	85	330	630	1	0
Consumption	795	8,547	1,805	52,580	2,646	2,764	2,497

2012 ²⁾	Canada	USA	Mexico	China*	Brazil	Russia	Japan
Production	1,765	10,466	1,180	51,280	3,295	2,020	1,280
Import	190	374	650	560	1	700	1,210
Export	1,160	2,309	75	280	570	1	1
Consumption	795	8,526	1,755	51,560	2,726	2,719	2,489

* Excl. Hong Kong ¹⁾ Provisional figures ²⁾ Forecast Source: USDA

Supplies of Pigs for Slaughter in Denmark and Exports

Slaughterhouses



	2011		2010		%-change
	Head	%-share	Head	%-share	2011:10
Slaughter Denmark	20,925,925	71.0	20,243,421	70.7	3.4
Export:					
Slaughter pigs/sows	500,395	1.7	895,814	3.1	-44.1
Piglets	8,039,111	27.3	7,509,591	26.2	7.1
Total	29,465,431	100	28,648,826	100	2.9

Slaughterings

2010	Slaughter pigs 50-110 kg	Sows more than 110 kg	Total
January	1,686,867	41,015	1,727,882
February	1,521,472	36,974	1,558,446
March	1,849,584	44,797	1,894,381
April	1,462,670	39,283	1,501,953
May	1,367,893	36,654	1,404,547
June	1,863,486	46,177	1,909,663
July	1,489,621	34,501	1,524,122
August	1,515,645	37,338	1,552,983
September	1,970,000	46,399	2,016,399
October	1,576,303	37,571	1,613,874
November	1,656,249	41,016	1,697,265
December	1,800,738	41,168	1,841,906
Jan. - dec.	19,760,528	482,893	20,243,421

2011	Slaughter pigs 50-110 kg	Sows more than 110 kg	Total
January	1,750,717	44,384	1,795,101
February	1,665,625	39,492	1,705,117
March	2,021,314	49,256	2,070,570
April	1,447,065	36,196	1,483,261
May	1,566,614	40,767	1,607,381
June	1,755,315	45,810	1,801,125
July	1,582,756	36,204	1,618,960
August	1,574,038	43,953	1,617,991
September	1,875,228	47,182	1,922,410
October	1,560,368	38,970	1,599,338
November	1,652,067	41,442	1,693,509
December	1,968,124	43,038	2,011,162
Jan. - dec.	20,419,231	506,694	20,925,925

Source: Reports to Production Levy

Structure of Slaughterhouses

Development in number of slaughterhouses

DS-members:	End year:					
	1970	1980	1990	2009	2010	2011
Cooperatives	50	18	5	2	2	2
Private owned	4	2	1	0	0	0
Total slaughterhouses	54	20	6	2	2	2

Not DS-members:

Private*			7	10	8	8
-----------------	--	--	----------	-----------	----------	----------

*Slaughterhouses with more than 10,000 pigs per year. No figures in 1970 and 1980 are available.



Pig Slaughtering in EU and Selected Countries

M head	2010	2011¹⁾	2012²⁾	%-change 2012:2011
Germany	58.60	59.30	59.55	0.4
Spain	40.27	41.28	41.22	-0.1
France	25.26	25.35	25.28	-0.3
Poland	19.97	19.81	17.93	-9.5
Denmark	20.11	20.75	20.98	1.1
Netherlands	14.00	14.50	14.36	-1.0
Italy	13.87	13.75	13.51	-1.7
Belgium/Luxembourg	12.03	11.92	11.69	-1.9
UK	9.66	10.05	10.24	1.9
Rumania	4.70	4.49	4.49	0.0
Austria	5.69	5.75	5.65	-1.7
Portugal	5.96	5.95	5.88	-1.2
Hungary	4.61	4.61	4.42	-4.1
Czech. Rep.	3.12	2.92	2.82	-3.4
Sweden	2.92	2.90	2.87	-1.0
Ireland	2.66	2.70	2.70	0.0
Finland	2.25	2.22	2.20	-0.9
Greece	1.83	1.81	1.84	1.7
Bulgaria	0.93	0.93	0.91	-2.2
Slovakia	0.89	0.83	0.74	-10.8
Lithuania	0.90	0.97	0.96	-1.0
Cyprus	0.73	0.71	0.70	-1.4
Estonia	0.41	0.39	0.37	-5.1
Latvia	0.32	0.34	0.32	-5.9
Slovenia	0.29	0.27	0.26	-3.7
Malta	0.09	0.09	0.09	0.0
EU-27	252.07	254.59	251.99	-1.0
Brazil	39.45	40.66	41.27	1.5
Canada	21.20	21.10	21.20	0.5
USA	110.30	110.60	111.80	1.1
Russia	28.30	28.90	29.90	3.5
Japan	16.79	16.30	16.60	1.8
China	667.00	652.60	668.50	2.4

¹⁾ Provisional ²⁾ Forecast Source: GIRA

The figures include slaughtering of pigs, i.e. imported pigs are included.

Employment and Wages

Number of Workers Employed in the Slaughterhouses

Average per month	2007	2008	2009	2010	2011
January	10,200	10,800	9,000	8,000	7,419
February	10,300	10,900	9,000	8,000	7,434
March	10,300	10,900	8,900	7,800	7,361
April	10,200	10,700	8,900	7,700	7,407
May	10,800	10,600	8,900	7,800	7,597
June	10,900	10,500	8,800	8,000	7,678
July	11,100	10,000	8,700	7,900	7,946
August	11,000	9,700	8,600	7,900	7,768
September	10,800	9,000	8,300	7,700	7,605
October	10,600	8,800	8,000	7,700	7,492
November	10,800	9,000	8,100	7,700	7,233
December	10,900	9,200	7,900	7,400	7,182
Total year	10,700	10,000	8,600	7,800	7,510

Source: Dansk Industri

Average wages for Danish slaughterhouse workers

	DKK/hour*	Index 1980=100
2004	217.66	322
2005	223.83	321
2006	227.29	336
2007	240.62	356
2008	251.03	371
2009	255.49	379
2010	256.19	380
2011	258.87	387

* Including holiday pay and sickness benefit. Source: Dansk Industri

Earnings of employees. Annual percentage increase (Industry)

	Denmark	Germany	Sweden	UK	Netherlands	Poland	USA
2007	4.1	0.9	3.7	3.6	3.3	10.8	1.9
2008	4.2	2.9	3.9	2.9	4.0	10.4	2.3
2009	2.6	1.7	1.9	1.8	2.0	4.2	1.3
2010	2.6	2.1	3.2	4.5	0.5	3.9	2.4
2011	2.2	2.5	2.8	1.4	1.4	4.6	2.9

Source: DA International lønstatistik

Producer Pig Prices and Economy



Producer Pig Prices

Payment to the producer

DKK/kg	Average Pig Price*	Bonus payment	Value of payment to producer accounts	Production levy	Total
2009	8.76	0.55	0.11	(0.05)	9.37
2010	9.07	0.80	0.11	(0.05)	9.93
2011	10.00	0.80	0.11	(0.06)	10.85

* After weight and meat percentage payment, and incl. discounts/cost at transport.

Producer pig prices

Producer pig prices DKK/kg, Danish Crown (best weight group)

Week	2009	2010	2011	Week	2009	2010	2011
1	9.00	8.00	9.20	27	9.80	10.20	10.30
2	8.80	8.00	9.00	28	10.00	10.00	10.30
3	8.80	8.00	9.00	29	9.80	9.80	10.30
4	8.60	8.00	8.80	30	9.80	9.80	10.30
5	8.40	8.20	9.00	31	9.80	10.00	10.30
6	8.40	8.40	9.30	32	9.60	10.00	10.10
7	8.20	8.60	9.60	33	9.60	9.80	10.10
8	8.20	8.60	9.60	34	9.60	9.80	10.10
9	8.20	8.60	9.60	35	9.60	9.80	10.10
10	8.20	8.60	9.60	36	9.60	9.60	10.10
11	8.20	8.60	9.80	37	9.60	9.60	10.10
12	8.20	8.60	10.00	38	9.60	9.40	10.10
13	8.40	8.80	10.00	39	9.40	9.20	10.10
14	8.60	8.80	10.00	40	9.20	9.20	10.30
15	8.80	8.80	10.00	41	9.00	9.20	10.30
16	9.00	8.80	10.00	42	8.80	9.20	10.30
17	9.00	9.00	10.00	43	8.60	9.20	10.50
18	9.20	9.20	10.30	44	8.60	9.20	10.50
19	9.20	9.50	10.30	45	8.40	9.20	10.80
20	9.20	9.70	10.30	46	8.60	9.20	10.80
21	9.20	9.90	10.30	47	8.60	9.20	10.80
22	9.40	10.20	10.10	48	8.80	9.20	11.00
23	9.60	10.20	10.10	49	8.80	9.20	11.00
24	9.60	10.40	10.30	50	8.80	9.20	11.00
25	9.60	10.40	10.30	51	8.40	9.20	10.60
26	9.80	10.40	10.30	52	8.00	9.20	10.40
				53	8.00		
Avg.	8,98	9,25	10,10				

Economy in Pig Production

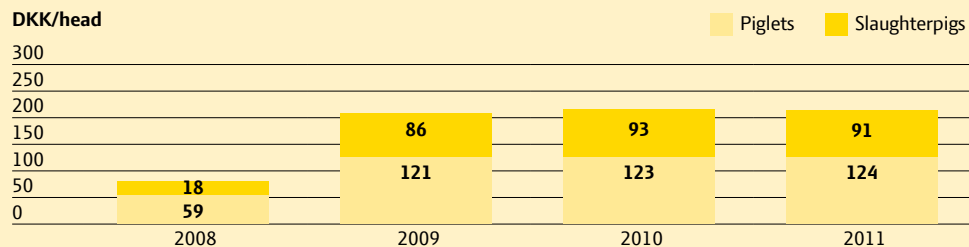
The ratio between the price for slaughter pigs and compound feeding stuff

Monthly ratio	2008	2009	2010	2011
January	3.97	4.68	5.72	4.99
February	3.84	4.77	5.68	4.92
March	4.18	4.84	6.21	5.11
April	4.32	5.27	6.61	5.20
May	4.46	5.76	6.96	5.29
June	4.75	6.06	7.71	5.70
July	4.81	6.22	7.14	5.28
August	5.13	6.23	6.54	5.38
September	5.47	6.55	5.68	5.43
October	5.32	6.18	5.42	5.56
November	4.93	6.14	5.33	5.77
December	4.80	6.04	5.30	5.90
Total year	4.67	5.73	6.19	5.38

The price of slaughter pigs = Danmarks Statistik's price for slaughter pigs (excl. Bonus).

The price of compound feeding stuff = Danmarks Statistik's price for compound feeding stuff

Gross margin 2008-2011



Source: Videncenter for Svineproduktion.

Social Importance of the Pig Industry

The total Danish pig production

Year	Tonnes	%-change from the year before	Value ex producer DKK M	%-change from the year before
2009	1,898,000	-4.4	18,025	-5.8
2010	1,974,000	+4.0	19,270	+6.9
2011	2,008,000	+1.7	21,571	+11.9

The production includes approved and discarded animals, slaughtered on the farms, exports of live animals and edible by-products.

Value of the Danish export

Year	Total export		Agricultural export		Animal agricultural export	
	DKK M	%-change from the year before	DKK M	%-change from the year before	DKK M	%-change from the year before
2009	496,903	-15.4	59,460	-6.1	39,500	-5.6
2010	542,484	9.2	66,498	11.8	41,608	5.3
2011	604,136	11.4	72,284	8.7	44,350	6.6

Export of pigmeat products

Year	Value DKK M	% -change from the year before	Share of pork export, percentage		
			Total export	Agricultural export	Animal agricultural export
2009	26,637	-7.9	5.4	44.8	67.4
2010	28,169	3.3	5.2	42.4	67.7
2011	30,564	8.5	5.1	42.3	68.9

Source: Danmarks Statistik and own estimates.

Export and Import of Pigmeat



Denmark's Export of Pigmeat

2011

Country	Tonnes	DKK M	Country	Tonnes	DKK M
Germany	611,580	7,198	Ukraine	3,504	31
UK	281,489	4,830	Slovakia	3,503	63
Poland	210,335	2,574	Norway	3,346	117
China	178,886	1,537	New Zealand	3,084	55
Japan	135,973	3,636	Greenland	2,955	104
Italy	125,498	1,800	Canada	2,647	70
Russia	117,718	1,654	Argentina	2,151	27
Sweden	48,314	1,201	Bulgaria	1,984	23
Australia	42,009	819	Croatia	1,933	33
USA	37,633	931	United Arab Emirates	1,831	24
Hong Kong	34,837	397	Belarus	1,542	24
Korea	31,015	455	Papua Ny Guinea	1,483	40
Netherlands	27,124	177	Thailand	1,478	18
France	21,263	438	Algeria	1,446	28
Czech Rep.	17,749	255	Hungary	1,444	26
Ireland	13,232	251	Faroe Islands	1,429	45
Greece	11,725	201	Austria	1,115	21
Lithuania	7,962	101	Uruguay	1,095	12
Rumania	6,759	89	Malaysia	1,082	13
Spain	6,710	180	Azerbaijan	1,030	13
Singapore	6,542	97	Guam	978	20
Taiwan	5,936	87	Mexico	953	13
Philippines	5,477	53	Bahama	947	17
Belgium/Luxembourg	5,283	77	New Caledonia	843	20
Portugal	5,187	90	Saudi Arabia	718	12
Estonia	5,175	84	Malta	578	15
Finland	5,151	140	Serbia	552	12
Cyprus	5,092	72	Other countries	8,327	188
Latvia	5,035	56	Total	2,070,668	30,564

Denmark's Export of Pigmeat (Tonnes)

2010

Tonnes	EU-27	3 rd countries	Total
Live pigs and sows	312,565	860	313,425
Bacon	97,773	1,304	99,077
Carcasses pigs/sows	75,610	541	76,151
Cuts	774,807	350,084	1,124,892
By-products	93,194	192,705	285,898
Canned meat	43,746	17,069	60,815
Other processed products	18,166	14,804	32,970
Total	1,415,862	577,366	1,993,228
%-share	71.0	29.0	100

2011

Tonnes	EU-27	3 rd countries	Total
Live pigs and sows	286,146	3,613	289,759
Bacon	99,891	1,209	101,101
Carcasses pigs/sows	77,016	296	77,312
Cuts	799,413	387,086	1,186,499
By-products	104,580	213,974	318,554
Canned meat	44,683	20,471	65,154
Other processed products	17,761	14,529	32,290
Total	1,429,490	641,179	2,070,668
%-share	69.0	31.0	100

Denmark's Export of Pigmeat (1,000 DKK)

2010

1,000 DKK	EU-27	3 rd countries	Total
Live pigs and sows	3,997,257	55,561	4,052,819
Bacon	1,869,272	44,211	1,913,483
Carcasses pigs/sows	734,588	8,682	743,270
Cuts	10,228,413	6,947,833	17,176,247
By-products	829,911	1,302,969	2,132,880
Canned meat	939,129	445,089	1,384,218
Other processed products	451,689	314,642	766,332
Total	19,050,259	9,118,989	28,169,249
%-share	67.6	32.4	100

Excl. payments from FEOGA: 10 DKK M

2011

1,000 DKK	EU-27	3 rd countries	Total
Live pigs and sows	3,790,041	155,709	3,945,750
Bacon	1,956,929	39,269	1,996,199
Carcasses pigs/sows	791,851	4,478	796,329
Cuts	11,157,319	7,715,375	18,872,695
By-products	828,448	1,815,685	2,644,133
Canned meat	995,746	543,927	1,539,673
Other processed products	447,593	321,908	769,500
Total	19,967,928	10,596,352	30,564,279
%-share	65.3	34.7	100

Excl. payments from FEOGA: 4.8 DKK M

Denmark's Export of Pigmeat for EU (Tonnes)

2010

Tonnes	Germany	UK	Poland	Italy	Other EU-countries	Total EU-27
Live pigs and sows	254,675	83	24,048	10,189	23,570	312,565
Bacon	518	92,973	55	28	4,199	97,773
Carcasses pigs/sows	70,397	-	4,587	-	626	75,610
Cuts	260,236	147,199	154,911	107,457	105,003	774,807
By-products	23,347	17,321	4,889	3,632	44,005	93,194
Canned meat	14,183	19,468	71	887	9,203	43,746
Other processed products	927	6,956	107	155	10,022	18,166
Total	624,283	284,001	188,669	122,348	196,562	1,415,862
%-share	44.1	20.1	13.3	8.6	13.9	100

2011

Tonnes	Germany	UK	Poland	Italy	Other EU-countries	Total EU-27
Live pigs and sows	208,967	61	43,872	11,124	22,123	286,146
Bacon	927	94,919	122	18	3,905	99,891
Carcasses pigs/sows	76,035	-	631	-	349	77,016
Cuts	278,465	139,075	159,281	109,983	112,609	799,413
By-products	32,869	18,866	6,271	3,216	43,357	104,580
Canned meat	13,225	21,718	59	956	8,725	44,683
Other processed products	1,093	6,850	99	202	9,518	17,761
Total	611,580	281,489	210,335	125,498	200,587	1,429,490
%-share	42.8	19.7	14.7	8.8	14.0	100

Denmark's Export of Pigmeat for EU (1,000 DKK)

2010

1,000 DKK	Germany	UK	Poland	Italy	Other EU-countries	Total EU-27
Live pigs and sows	3,154,437	6,269	297,305	187,489	351,757	3,997,257
Bacon	17,146	1,746,207	1,836	1,041	103,041	1,869,272
Carcasses pigs/sows	673,820	-	51,770	-	8,998	734,588
Cuts	2,797,723	2,223,384	1,781,214	1,468,844	1,957,247	10,228,413
By-products	187,877	125,700	43,888	72,966	399,479	829,911
Canned meat	255,975	428,575	1,521	15,234	237,824	939,129
Other processed products	21,877	174,257	2,753	3,515	249,288	451,689
Total	7,108,854	4,704,392	2,180,288	1,749,090	3,307,635	19,050,259
%-share	37.3	24.7	11.4	9.2	17.4	100

2011

1,000 DKK	Germany	UK	Poland	Italy	Other EU-countries	Total EU-27
Live pigs and sows	2,684,516	4,902	559,854	190,570	350,199	3,790,041
Bacon	26,560	1,829,367	4,138	650	96,214	1,956,929
Carcasses pigs/sows	780,170	-	7,439	-	4,241	791,851
Cuts	3,214,845	2,188,944	1,931,967	1,520,758	2,300,805	11,157,319
By-products	209,108	141,357	67,009	66,468	344,506	828,448
Canned meat	253,756	487,657	1,364	17,138	235,830	995,746
Other processed products	29,368	177,494	2,669	4,746	233,316	447,593
Total	7,198,324	4,829,722	2,574,441	1,800,330	3,565,112	19,967,928
%-share	36.0	24.2	12.9	9.0	17.9	100

Denmark's Export of Pigmeat for 3rd Countries (Tonnes)

2010

Tonnes	China		Russia	Other 3 rd countries	Total 3 rd countries
	Hong Kong	Japan			
Live pigs and sows	133,145	2	519	206	860
Bacon	14,893	174	81	1,034	1,304
Carcasses pigs/sows	7,98	49	51	433	541
Cuts	15,226	134,548	88,847	111,463	350,084
By-products	155,639	33	13,831	23,202	192,705
Canned meat	373	3,195	737	12,764	17,069
Other processed products	383	1,355	600	12,466	14,804
Total	171,777	139,355	104,667	161,568	577,366
%-share	29.8	24.1	18.1	28.0	100

2011

Tons	China		Russia	Other 3 rd countries	Total 3 rd countries
	Hong Kong	Japan			
Live pigs and sows	72	5	2,896	640	3,613
Bacon	34,911	139	68	968	1,209
Carcasses pigs/sows	15,15	29	50	202	296
Cuts	40,565	129,861	93,641	123,019	387,086
By-products	172,320	1,077	20,039	20,538	213,974
Canned meat	437	3,554	438	16,042	20,471
Other processed products	279	1,308	585	12,356	14,529
Total	213,723	135,973	117,718	173,765	641,179
%-share	33.3	21.2	18.4	27.1	100

Denmark's Export of Pigmeat for 3rd Countries (1,000 DKK)

2010

1,000 DKK	China		Russia	Other 3 rd countries	Total 3 rd countries
	Hong Kong	Japan			
Live pigs and sows	19,743	1,236	18,480	16,102	55,561
Bacon	475	6,832	5,155	31,750	44,211
Carcasses pigs/sows	114	1,510	835	6,224	8,682
Cuts	172,442	3,468,291	1,170,284	2,136,816	6,947,833
By-products	988,852	442	111,953	201,722	1,302,969
Canned meat	10,042	86,508	14,112	334,427	445,089
Other processed products	7,349	38,198	14,496	254,600	314,642
Total	1,199,017	3,603,017	1,335,314	2,981,641	9,118,989
%-share	13.1	39.5	14.6	32.7	100

2011

1,000 DKK	China		Russia	Other 3 rd countries	Total 3 rd countries
	Hong Kong	Japan			
Live pigs and sows	7,956	2,543	104,733	40,476	155,709
Bacon	1,122	5,223	3,333	29,591	39,269
Carcasses pigs/sows	514	462	863	2,639	4,478
Cuts	527,249	3,470,187	1,318,523	2,399,416	7,715,375
By-products	1,380,722	11,727	201,740	221,496	1,815,685
Canned meat	9,446	104,763	9,307	420,412	543,927
Other processed products	7,641	40,711	15,744	257,811	321,908
Total	1,934,651	3,635,617	1,654,242	3,371,841	10,596,352
%-share	18.3	34.3	15.6	31.8	100

Trend in Pigmeat Export

Products

Tonnes	1991	2001	2010	2011
Live pigs and sows	9,540	65,900	313,425	289,212
Bacon	136,349	126,719	99,077	101,224
Carcasses pigs/sows	16,784	63,800	76,151	77,122
Cuts	539,918	960,535	1,124,892	1,187,302
By-products	109,872	202,989	285,898	317,567
Canned meat	150,152	86,672	60,815	65,451
Other processed products	41,289	43,360	32,970	32,382
Total	1,003,905	1,549,975	1,993,228	2,070,260

1,000 DKK	1991	2001	2010	2011
Live pigs and sows	140,396	921,069	4,052,819	3,917,339
Bacon	2,975,766	3,277,160	1,913,483	1,998,830
Carcasses pigs/sows	207,388	790,456	743,270	795,323
Cuts	11,116,442	19,523,104	17,176,247	18,873,631
By-products	813,918	1,275,325	2,132,880	2,649,165
Canned meat	3,356,009	2,129,107	1,384,218	1,544,528
Other processed products	762,786	974,101	766,332	770,812
Total	19,372,704	28,890,323	28,169,249	30,549,628

Trend in Pigmeat Export

Main countries

Tonnes	1991	2001	2010	2011
Germany	168,122	314,474	624,283	611,580
UK	245,052	300,518	284,001	281,489
Poland	n.a.	n.a.	188,669	210,335
Italy	81,965	136,736	122,348	125,498
France	117,591	79,933	18,114	21,263
Other EU-countries	38,624	134,559	178,448	179,324
Total EU	651,354	966,220	1,415,862	1,429,490
China/Hong Kong	n.a.	n.a.	171,777	213,723
Japan	150,842	230,284	139,355	135,973
Russia	n.a.	n.a.	104,667	117,718
USA	86,601	52,271	36,983	37,633
Other countries	112,396	301,200	124,585	136,132
Total 3rd countries	349,839	538,755	577,366	641,179
Total	1,001,193	1,549,975	1,993,228	2,070,668

1,000 DKK	1991	2001	2010	2011
Germany	2,915,900	5,239,045	7,108,854	7,198,324
UK	4,678,450	6,190,089	4,704,392	4,829,722
Poland	n.a.	n.a.	2,180,288	2,574,441
Italy	1,416,624	2,256,070	1,749,090	1,800,330
France	2,216,879	1,380,810	359,757	437,785
Other EU-countries	625,545	2,339,910	2,947,877	3,127,326
Total EU	11,853,398	17,405,924	19,050,259	19,967,928
China/Hong Kong	n.a.	n.a.	1,199,017	1,934,651
Japan	3,938,282	6,420,382	3,603,017	3,635,617
Russia	n.a.	n.a.	1,335,314	1,654,242
USA	1,699,086	1,574,472	879,032	931,018
Other countries	1,826,439	3,489,545	2,102,609	2,440,823
Total 3rd countries	7,463,807	11,484,399	9,118,989	10,596,352
Total	19,317,205	28,890,323	28,169,249	30,564,279

Export of Live Pigs from Denmark

2010	Piglets				
	0-15 kg.	15-50 kg	Slaughter pigs	Sows	Total
January	36,494	564,680	100,981	10,685	712,840
February	28,763	540,337	82,610	10,856	662,566
March	35,165	596,857	110,574	6,929	749,525
April	34,617	595,094	78,137	9,023	716,871
May	31,416	649,489	65,818	10,553	757,276
June	34,987	622,364	60,840	11,056	729,247
July	38,570	554,633	50,167	9,074	652,444
August	36,362	618,294	38,426	15,446	708,528
September	36,830	561,394	35,804	12,034	646,062
October	39,318	577,546	40,929	10,636	668,429
November	33,603	559,246	52,520	5,048	650,417
December	49,889	633,643	57,303	10,365	751,200
Jan. - Dec.	436,014	7,073,577	774,109	121,705	8,405,405

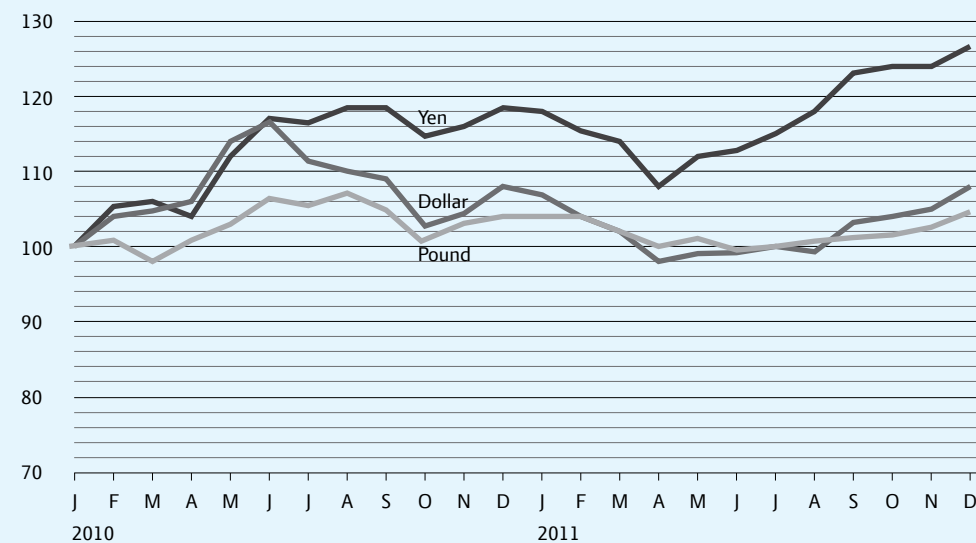
2011	Piglets				
	0-15 kg.	15-50 kg	Slaughter pigs	Sows	Total
January	38,101	617,156	39,060	11,587	705,904
February	39,643	550,104	40,793	10,068	640,608
March	44,125	711,094	46,908	14,498	816,625
April	36,282	578,099	28,622	5,210	648,213
May	30,519	679,442	38,739	15,249	763,949
June	26,544	591,634	43,366	9,701	671,245
July	35,273	608,954	25,263	5,803	675,293
August	30,860	668,920	22,492	8,270	730,542
September	29,656	670,255	22,308	10,639	732,858
October	29,646	641,204	21,835	10,333	703,018
November	28,651	666,286	25,386	7,635	727,958
December	37,642	649,021	27,601	9,029	723,293
Jan. - Dec.	406,942	7,632,169	382,373	118,022	8,539,506

Source: Report to Production Levy

The Development in Rate of Exchange

DKK per 100 units	Pound		Dollar		Yen	
	2010	2011	2010	2011	2010	2011
January	842.99	879.82	521.55	558.00	5.71	6.75
February	849.77	880.93	543.99	546.27	6.03	6.61
March	825.42	860.72	548.49	532.75	6.05	6.52
April	851.40	844.58	555.17	516.75	5.94	6.19
May	868.22	849.47	591.90	519.65	6.42	6.40
June	899.03	839.89	609.55	518.67	6.71	6.45
July	891.83	842.79	583.72	522.76	6.67	6.59
August	904.51	849.80	577.90	519.42	6.77	6.75
September	886.92	854.23	570.26	540.93	6.76	7.04
October	850.91	855.34	536.57	543.31	6.56	7.09
November	871.93	867.90	545.99	549.01	6.62	7.09
December	879.27	880.88	563.81	564.20	6.76	7.25

Index
January 2009 = 100



Denmark's Import of Pigmeat

2010

Tonnes	Germany	Sweden	Other EU-27	Other countries	Total
Live pigs and sows	29	1	1	-	32
Bacon	7,725	463	1,564	3	9,755
Carcasses pigs/sows	3	1	1	20	25
Cuts	38,296	1,039	10,099	1,232	50,666
By-products	34,227	5,614	22,513	6,272	68,625
Canned meat	11,690	1,228	11,216	18	24,152
Other processed products	14,513	1,916	6,611	89	23,129
Total Fresh/frozen and bacon	106,483	10,262	52,004	7,634	176,384
%-share	60.4	5.8	29.5	4.3	100

2011

Tonnes	Germany	Sweden	Other EU-27	Other countries	Total
Live pigs and sows	3	-	-	-	3
Bacon	8,988	114	6,577	2,136	17,815
Carcasses pigs/sows	8	-	9	2	19
Cuts	50,763	1,124	18,923	8,548	79,358
By-products	36,769	7,486	12,184	17,250	73,689
Canned meat	12,142	1,066	8,521	3,963	25,692
Other processed products	15,128	1,721	5,258	1,553	23,659
Total Fresh/frozen and bacon	123,801	11,511	51,472	33,451	220,235
%-share	56.2	5.2	23.4	15.2	100

EU's Export to 3rd Countries

Products

Tonnes (product weight)	2009 EU-27	2010 EU-27	2011 EU-27
Live pigs	151,188	97,163	84,934
Fresh/frozen pigmeat	949,796	1,162,793	1,431,989
Bacon	26,436	30,580	34,304
Other processed products	101,897	105,530	125,689
Canned meat	54,270	60,276	74,930
By-products	1,100,949	1,228,784	1,438,711
Total	2,384,536	2,685,126	3,190,556

Source: EUROSTAT, Luxembourg.

Main countries

Tonnes	Export countries		Import countries	
	2010 EU-27	2011 EU-27	2010 EU-27	2011 EU-27
Germany	669,665	781,805	Russia	808,709
Denmark	562,966	624,890	Hong Kong	426,697
Spain	213,195	317,321	China	207,128
Netherlands	223,313	277,786	Japan	223,637
France	225,862	256,397	Korea	100,790
Poland	222,607	261,405	Ukraine	137,736
Belgium	109,081	107,707	Belarus	80,331
Italy	79,258	97,453	Philippines	89,407
Austria	63,841	77,191	Croatia	67,784
Hungary	65,097	72,725	Angola	44,465
UK	39,708	58,883	USA	58,593
Ireland	32,273	58,640	Australia	50,304
Others	178,259	198,354	Others	389,545
EU-27	2,685,125	3,190,557	EU-27	2,685,126
				3,190,556

Source: EUROSTAT, Luxembourg.

USA and Japan's Trade in Pigmeat

USA's import

Tonnes	Fresh/frozen	Processed products	Total 2011	Total 2010
Canada	243,532	37,570	281,102	304,950
Denmark	30,037	2,761	32,798	33,304
Poland	7,408	1,515	8,923	9,748
Mexico	4,670	654	5,324	4,207
Other countries	3,884	11,741	15,625	15,091
lalt	289,531	54,241	343,772	367,300

USA's export

Tonnes	Fresh/frozen	Processed products	Total 2011	Total 2010
Japan	464,564	13,113	477,677	403,113
Mexico	285,777	93,314	379,091	384,164
Canada	122,593	64,099	186,692	162,917
China	219,216	5,256	224,472	51,310
Hong Kong	36,778	1,503	38,281	60,803
Korea	148,626	1,842	150,468	73,000
Russia	63,417	1,637	65,054	54,627
Australia	55,987	3,015	59,002	46,849
Phillipines	29,204	5,373	34,577	43,951
Taiwan	14,583	111	14,694	21,367
Other countries	106,718	17,054	123,772	134,151
Total	1,547,463	206,317	1,753,780	1,436,252

The above-mentioned figures are excl. by-products

Source: USDA, Washington

Japan's import Fresh/frozen pigmeat

Tonnes	2008	2009	2010	2011
USA	336,973	288,664	298,347	323,749
Canada	174,632	172,334	178,648	174,004
Denmark	159,784	122,923	133,586	130,723
Other countries	146,228	118,963	142,436	164,631
Total	817,617	702,884	753,017	793,108

Source: Ministry of Agriculture, Japan



Common Agricultural Policy and Export Refunds



Common Agricultural Policy and Export Refunds

Subsidies for private storing

Year	Period
2000	None
2001	None
2002	9/12-31/12
2003	1/1-6/2
2004	1/1-22/1
2005	None
2006	None
2007	29/10-27/11
2008	None
2009	None
2010	None
2011	1/2-22/2

Export refunds

Fresh, chilled and frozen cuts

Export refunds 2011 DKK/kg	Hams, shoulders/ fore-ends and loins with bones	Bellies with rind	Deboned hams, shoulders/ fore-ends and loins excl. Japan Products	Bellies without rind and bone Excl. Japan products
General	0	0	0	0

Processed products

Export refunds 2011 DKK/kg	Dried sausages	Cooked sausages	Cooked hams*	Cooked shoulders	Luncheon meat
General:	1.45	1.13	2.16/1.27	1.70/1.27	0

* o/u 1 kg

Consumer Prices of Pigmeat in Denmark

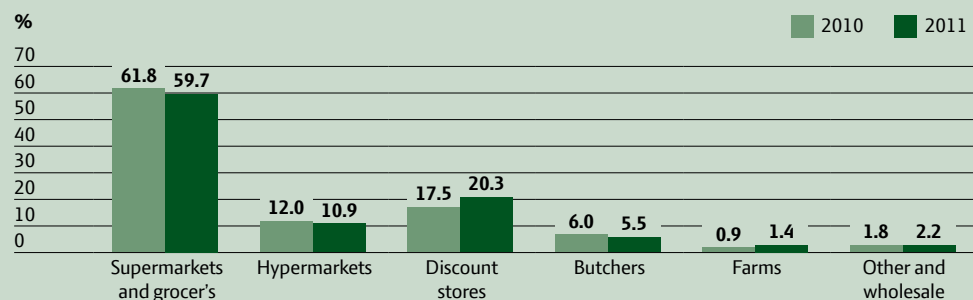
Consumption and Prices

DKK/kg	Tenderloin	Cuts from loin	Bellies	Cuts from ham	Minced pigmeat
1. Quarter	74.05	47.71	43.17	58.88	38.85
2. Quarter	73.49	54.1	49.52	63.15	40.21
3. Quarter	75.05	49.64	45.06	65.16	40.41
4. Quarter	73.49	46.4	42.18	63.08	42.22
Total year 2011	74.18	48.86	44.91	60.82	40.64
Total year 2010	68.56	45.82	43.81	60.83	39.45

Source: GfK Denmark A/S, ConsumerScan



Sale of Fresh/frozen Meat from Different Types of Shops



Source: GfK Denmark A/S, ConsumerScan

Consumption of Meat in the EU

Kg per capita	2010			2011		
	Pigmeat	Beef	Poultry	Pigmeat	Beef	Poultry
Germany	54.0	9.9	18.2	54.9	12.3	18.9
France	36.5	25.1	26.0	33.0	25.2	24.1
Italy	38.4	22.6	20.5	37.5	22.1	18.6
Netherlands	42.5	18.0	22.2	41.8	17.5	22.4
UK	25.5	16.9	29.3	21.7	18.4	29.0
Belgium/Lux.	45.9	21.7	17.6	39.0	17.1	19.2
Ireland	39.1	16.9	27.5	33.1	19.9	24.7
Denmark	63.0	27.9	n.a.	53.4	27.5	n.a.
Greece	31.2	17.4	21.0	25.4	17.3	19.3
Spain	64.8	12.8	33.7	55.0	12.6	29.9
Portugal	43.6	15.8	30.5	45.3	15.9	35.3
Austria	57.1	18.4	18.4	55.6	13.6	20.1
Sweden	34.5	21.2	13.5	36.2	23.3	14.7
Finland	31.9	18.3	14.6	33.7	18.1	19.3
Total EU-27	43.2	17.6	23.6	40.4	18.1	22.9
Cyprus	73.5	8.3	50.0	68.4	10.1	57.1
Czech Rep.	40.5	8.7	23.0	41.4	9.1	22.3
Estonia	3.7	11.3	22.8	32.5	9.4	20.8
Hungary	n.a.	2.3	34.6	36.9	2.7	28.8
Latvia	18.6	10.2	8.5	28.2	4.3	17.2
Lithuania	22.9	10.5	11.0	41.3	3.9	13.0
Malta	n.a.	18.3	21.3	28.9	18.3	36.4
Poland	48.8	7.6	18.0	51.0	3.8	22.6
Slovakia	28.6	n.a.	18.5	33.5	2.9	19.2
Slovenia	n.a.	19.7	24.5	30.7	19.6	26.0
Bulgaria	15.3	5.2	15.9	25.4	4.1	18.6
Rumania	18.6	7.3	11.1	31.6	8.1	19.8
Total EU-27	40.4	n.a.	22.5	40.4	15.9	22.7

Source: GIRA

The official figures for meat available for consumption shows the statistics calculated quantity available in the market. However, the real consumption of pigmeat in Denmark differs substantially from the statistical quantity available. Different official surveys prove that the real consumption is half the quantity shown in official supply statistics.



Danish Agriculture & Food Council

Axelborg, Axeltorv 3

T +45 3339 4000

E info@lf.dk

DK-1609 København V

F +45 3339 4141

W www.lf.dk